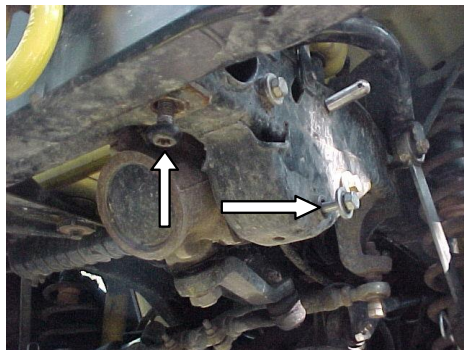




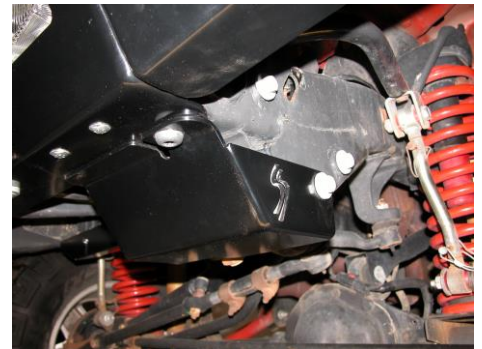
Installation Instructions
for
Steering Box Skid Plate
for
1997-2006 Jeep® TJ Wrangler

Thank you for purchasing your new Skid Row Offroad steering box skid plate. It is designed to give you peace of mind while traversing even the toughest trails.



Step 1: Remove the two bolts indicated in the picture to the left.

Step 2: Place the steering box skid plate in position and re-insert the steering box bolt.



Step 3: Re-insert the bumper bolt and then snug up both bolts. Do not tighten either of them at this time.



Step 4: Drill a 5/16" hole into the frame cross-member as shown in the photo to the right.

Note: You may find it easier if you first mark the hole location and then remove the skid plate to drill the hole.

Step 5: Install the 3/8-16x1" self tapping bolt into the hole just drilled and tighten.

Step 6: Tighten all hardware once everything is fit together. Be sure to tighten the steering box bolt to the

factory recommended torque.

We hope you enjoy your new Skid Row Offroad steering box skid plate!

Sincerely,

The Staff at SFK Manufacturing, LLC

SFK Manufacturing, LLC
PO BOX 306, Shermans Dale, PA 17090
Phone 717-701-8315
Fax 717-701-8316

www.SkidRowOffroad.com