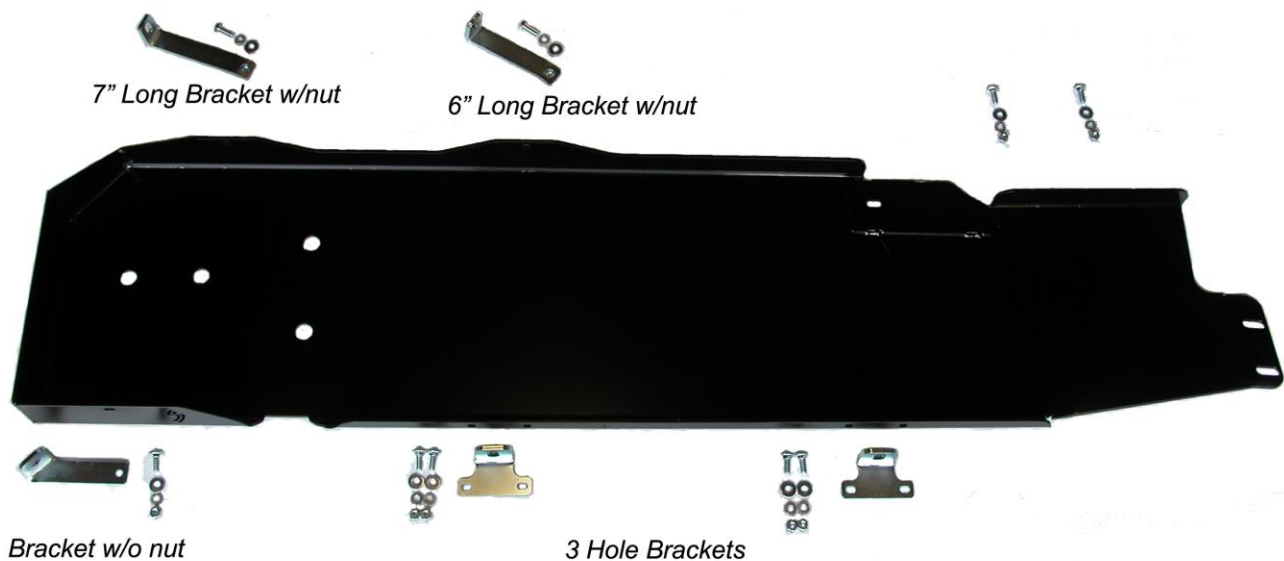


Installation Instructions
for
Gas Tank Skid Plate, JP-5014
for
2007-2017 Jeep® JK Wrangler 4 Door

Thank you for purchasing your new Skid Row Offroad gas tank skid plate. It is designed to give you peace of mind while traversing even the toughest trails.

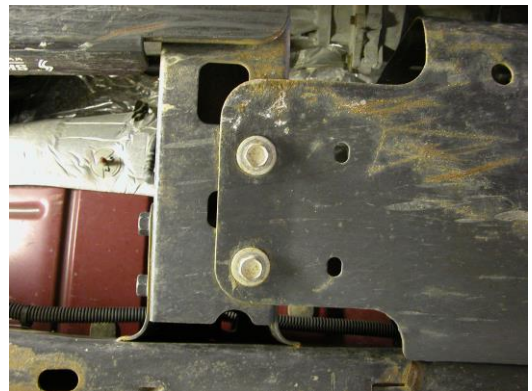
Your skid plate package should come complete with the following parts:

1. (1) Gas tank Skid Plate
2. (2) Mounting Brackets with 3 Holes
3. (1) Mounting Bracket w/o Nut
4. (1) 7" Mounting Bracket with Nut
5. (1) 6" Mounting Bracket with Nut
6. (2) 3/8-16 x 1" Hex Head Bolts
7. (7) 3/8-16 x 1" Carriage Head Bolts
8. (7) 3/8-16 Hex Nuts
9. (9) 3/8 Flat Washers
10. (9) 3/8 Lock Washers



Step 1: Remove the two bolts at the front of the factory gas tank skid plate that are shown in the photo at right.

Step 2: Remove the bolt that holds the transfer case skid plate to the factory gas tank skid plate. Do NOT remove any other mounting bolts!





Step 3: Place five of the carriage bolts through the holes on the side of the skid plate with the Skid Row logo cut out as shown in the photo at left. Their threads should face outward. Put a nut on each one to keep it in place while positioning the skid plate.

Step 4: Using a floor jack, lift the gas tank skid plate into place and re-install the two front bolts removed in Step 1. Be careful not to cross-thread them! Leave them loose at this time in order to shift the skid plate if needed.

NOTE: Leave all the bolts loose while installing the skid plate. This makes installation easier, especially when one is a tight fit. The bolts are to be tightened only after all of them have been installed. Tightening is the last step.

Step 5: To install the two Mounting Brackets with 3 Holes, first remove the factory skid plate mounting bolts from the chassis. Then remove the nuts that were installed on the two carriage bolts for each bracket. Place the bracket over the carriage bolts and install the flat washers, lock washers, and nuts. Then re-install the factory mounting bolt through the bracket as shown in the photos.



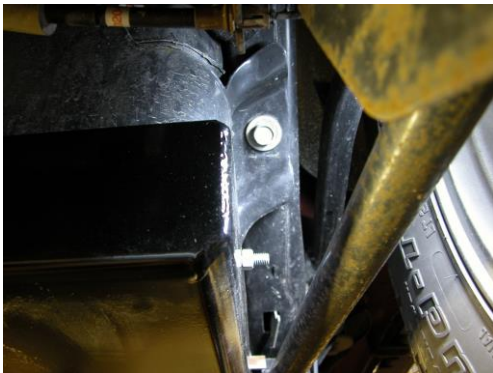
Step 6: The 6" Mounting Bracket with Nut is installed in the middle, inboard side of the skid plate, near the accordion seal on the driveshaft. Remove the factory mounting bolt that is shown in the photo below. Place the bracket in position and install one of the 3/8-16 x 1" Hex Head Bolts, a flat washer, and a lock washer through the skid plate into the nut on the bracket. Then re-install the factory mounting bolt.



Step 7: The 7" Mounting Bracket with Nut is installed at the rear, inboard side of the skid plate. Remove the factory mounting bolt that is above the slotted hole. Place the bracket in position and install one of the 3/8-16 x 1" Hex Head Bolts, a flat washer, and a lock washer through the skid plate into the nut on the bracket. Then re-install the factory mounting bolt.



Step 8: The Mounting Bracket w/o Nut is installed at the rear, outboard side of the skid plate, near the Skid Row logo. Again, remove the factory skid plate mounting bolt from the chassis. Then remove the nut that was installed on the carriage bolt. Place the bracket over the carriage bolt and install the flat washer, lock washer, and nut. Then re-install the factory mounting bolt through the bracket as shown.



Step 9: Use the remaining two carriage head bolts, flat washers, lock washers, and nuts to attach the gas tank skid plate to your Skid Row Offroad transfer case skid plate as shown below.



Step 10: Re-install the factory mounting bolt for the transfer case skid plate through the gas tank skid plate as shown.

Step 11: Tighten all the nuts and bolts and you're ready to hit the trail!

We hope you enjoy your new Skid Row Offroad gas tank skid plate!

Sincerely,

The Staff at

SFK Manufacturing, LLC

PO Box 306, Shermans Dale, PA 17090
Phone 717-701-8315
Fax 717-701-8316

www.SkidRowOffroad.com

LIMITED WARRANTY

1. SFK Manufacturing, LLC ("SFK") warrants all Skid Row Offroad (SRO) products sold by SFK and purchased from an authorized SRO dealer to be free of defects in material and/or workmanship for life of the vehicle after the initial purchase, for the original purchaser.
2. The determination of whether a product is defective shall be made by SFK in its sole and exclusive discretion.
3. If SFK determines that a product is defective and that this warranty applies, SFK's only responsibility shall be limited to repair or replacement of the defective product. SFK will not be responsible for any costs, losses, or damages incurred as a result of loss of use of product.
4. This warranty is subject to the following limitations and restrictions in addition to any imposed by virtue of applicable law.
 - a. This warranty applies only to SRO products purchased from an authorized SRO dealer and is valid for the original purchaser only.
 - b. Any product which the original purchaser claims is defective must be returned to SFK for warranty inspection and must be accompanied by the original purchase receipt and/or invoice from an authorized SRO dealer. The invoice or receipt must clearly identify the authorized dealer.
 - c. All products returned to SFK for warranty inspection must receive prior return authorization from SFK, which can be provided by phone. For authorization call (717) 701-8315.
 - d. Before removing any SRO part to return for inspection, the original purchaser must photograph the part showing its proper installation on the vehicle. The original purchaser must send any photograph to SFK with the claimed defective part.
 - e. This warranty specifically excludes:
 - i. Damage caused by misuse, abuse, or neglect.
 - ii. Damage caused by improper installation or mounting.
 - iii. Damage caused by anything other than defects in materials and workmanship.
 - iv. Normal wear and tear.
 - v. Rusting and cosmetic damage to SRO part.
 - vi. All consequential and incidental damages, including but not limited to, shipping costs.
 - vii. **Impact damage is not covered by warranty.** Skid plates are meant to prevent damage to more important components and are not impervious to damage themselves.
5. Warranty is void if any modification, change, or alteration has been made to the product that is not specifically instructed and approved in writing by SFK.

All warranties implied by state law, including the implied warranties of merchantability and fitness for a particular purpose, are hereby limited to the duration of the written warranty. Any warranty of fitness for a particular purpose is limited to only those uses instructed by SFK Manufacturing, LLC. With the exception of any warranties implied by state law as hereby limited, the foregoing express limited warranty is exclusive and in lieu of all other warranties, guarantees, agreements, and similar obligations of the manufacturer or seller express or implied. This warranty gives you specific legal rights, which vary, from state to state.